



It's only progress
if we all progress



120 years of social commitment

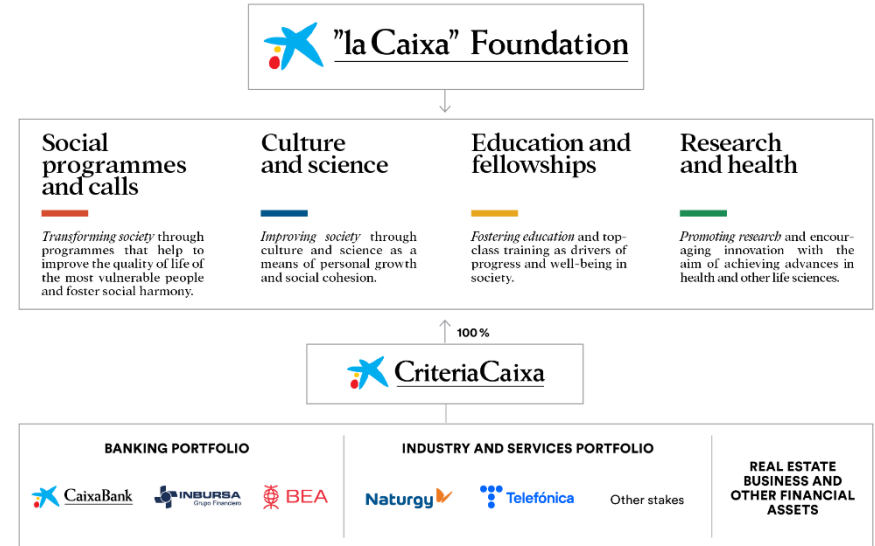
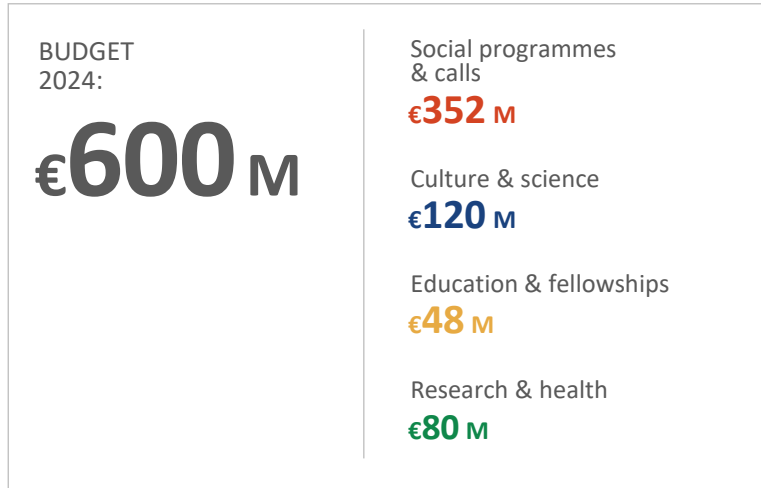
La Caja de Pensiones para la Vejez y de Ahorros de Cataluña y Baleares, "la Caixa", was founded in 1904 by the Catalan lawyer, Francesc Moragas Barret, with the support of various organisations from Catalan civil society.

From the very start, "la Caixa" Foundation has earned a reputation for its **strong social commitment and vocation to further the interests of society at large**, both through its financial business and also its work in society, funding and carrying out activities related to society, education, culture and science.

"la Caixa" Foundation is one of the most important foundations in the world by volume of social investment.

Within its structure, "la Caixa" Foundation owns a financial holding, **CriteriaCaixa**, which manages its business assets.

Budget and breakdown of the investment in 2024



Social programmes
and calls

We promote the
transformation
of society



Child poverty

Through the **CaixaProinfancia** programme, we promote the social and educational development of children and teenagers aged 0 to 18 from families at risk of marginalisation.



Children attended:

Since the programme began:

376,405

In 2023:

65,719

Partner organisations:

More than **420**

Comprehensive care for people with *advanced diseases*

We provide **psychosocial and spiritual** support for people coming to the end of their lives, as well as their relatives.

Programme started in 2008

Data as of 31 December 2023

76 teams in **172** hospitals

People with advanced diseases attended:

Since the programme began:

326,866

In 2023:

40,222

Relatives attended:

Since the programme began:

416,939

In 2023:

45,916



Elderly people

We assist the elderly by maximising their opportunities for personal growth and helping them to build up supportive relationships so they can enjoy a full life engaged with their community, as well as to prevent isolation and loneliness.

Programme started in 1915

Data as of 31 December 2023



In 2023:

477,591
participants

17,496
activities

Employment

We help employment-vulnerable people to **find a job**.

Employment contracts:

Since the programme began:

447,284

In 2023:

46,603

532 partner organisations

Partner companies:

Since the programme began:

91,379

In 2023:

16,692



Programme started in 2006

Data as of 31 December 2023



Calls for Social Projects

We work together with non-profit organisations to **boost initiatives** aimed at socially vulnerable people.

Projects financed:

Since the programme began:

22,366

In 2023:

1,559

Programme started in 1999

Data as of 31 December 2023



Incorpora

PROGRAM

Incorpora

A new way to add company value

Through Incorpora program, the company has the opportunity to promote the diversity values, inclusion and equity, and to contribute with the creation of a more egalitarian, fairer and more sustainable society



The collaboration with the Incorpora program not only offers the company to incorporate motivation and diverse talent, also helps to improve the working climate and pride of belonging, which enriches its human capital.



It contributes to the achievement of the Sustainable Development Goals (Agenda 2030):



Incorpora

A socio-labour integration program...

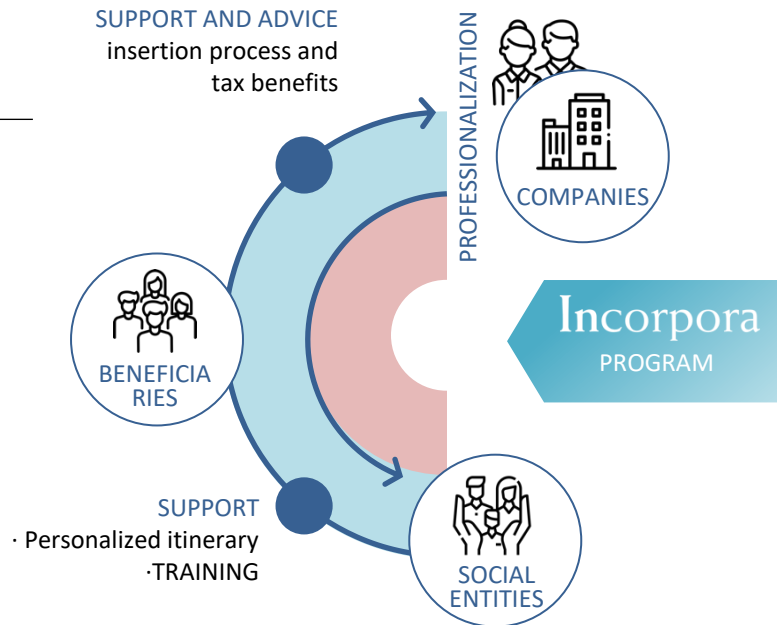
The mission of Incorpora program is mediate with employment between people in a risk of exclusion situation and companies with a social, environmental and good governance commitment (ESG criteria) as a social inclusion way.

...which promotes socially responsible territories

/ Through the collaborative work and the network of the territory's social entities

/ with the person as a protagonist and their support, from proximity

/ with the companies work, through the professional advice of the job prospector



Labour integration social entities

The program includes 482 job integration social entities that work in a network with the business industry of Spain and Portugal, and is also present in Morocco, Poland and Hungary.

- 406 social entities in Spain
- 24 territorial groups
- 1.053 professionals



Incorpora

A labour intermediation service

We support the person



1. Welcome
2. Comprehensive assessment and competency profile
3. **Building the work itinerary**
 - a) Career guidance: support and training
 - a) Social Skills
 - b) Professional skills
- / **Support intensity according to the profile**

We support the company

1. business industry valuation and activity sectors
2. Business prospecting
3. Company Action plan:
 - a) Quality
 - b) Answer Speed
 - c) Proximity
4. Identify workplaces to cover



Recruitment, applicants pre-selection and selection
Insertion Support:
follow-up of workplace adaptation

Incorpora

Specific lines of action for groups with more difficulties

Specific lines for improving employability

reIncorpora

People deprived of liberty

3.560

participants

1.558

looking for work

1.449 (93 %)

hired people

Incorpora

Jove

People from the child protection systems

5.515

participants

2.297

inserts

1.948

young people served

789

young inserts

Pilot project in Andalusia, Catalonia and Madrid

Incorpora

Salut mental

People with severe mental disorder

6.498

participants with mental disorder

2.766

inserts

Incorpora

Formació

Development of skills tailored to the company

487

courses

6.220

participants

4.345

inserts

Incorpora

Autoocupació

People with an entrepreneurial profile

3.519

participants

1.586

small businesses created

10.713.687 €

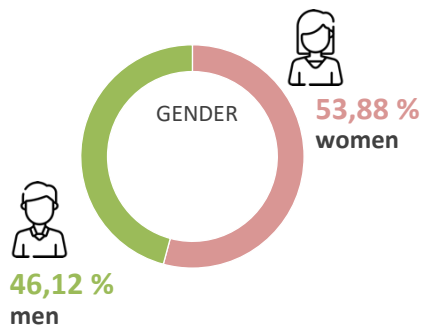
microcredits granted

Incorpora

Results 2023

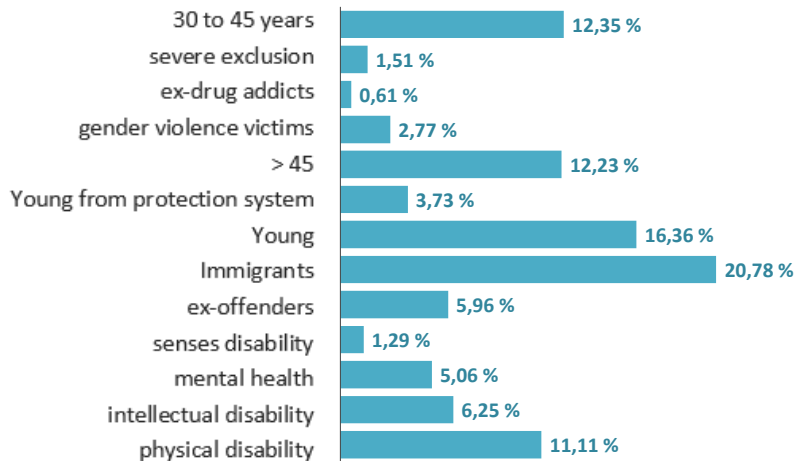


87.539
attended people

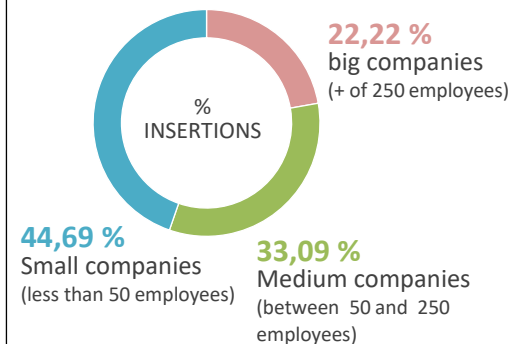


42.130
job placements

PEOPLE INSERTED PROFILE:



14.738
contracting companies



Incorpora

A person wearing an orange t-shirt, a black safety harness with "STIHL" written on it, and a protective face shield is shown from the side, operating a chainsaw. The background is a blurred outdoor setting with rocks and greenery.

*People who bring value to
companies*

*Companies offer opportunities to
people*

*A program in the service of
individual persons and companies*

Fundació "la Caixa" / Àrea d'Inclusió Social
Av. Diagonal, 621-629, torre 2, planta 3. 08028 Barcelona
Servei d'Informació: 900 223 040

www.incorpora.org

A photograph of two women sitting at a table in a classroom, smiling and talking. The woman on the left has long blonde hair and is wearing a yellow sweater. The woman on the right has dark hair tied back and is wearing a dark blue long-sleeved shirt. They are surrounded by various school supplies like pens and pencils in containers. In the background, there are bookshelves filled with books and a chalkboard.

The world may have changed
but our commitment hasn't.

We did it before.
We're doing it now.
And we'll keep on doing it.



"la Caixa" Foundation

It's only progress if we all progress