

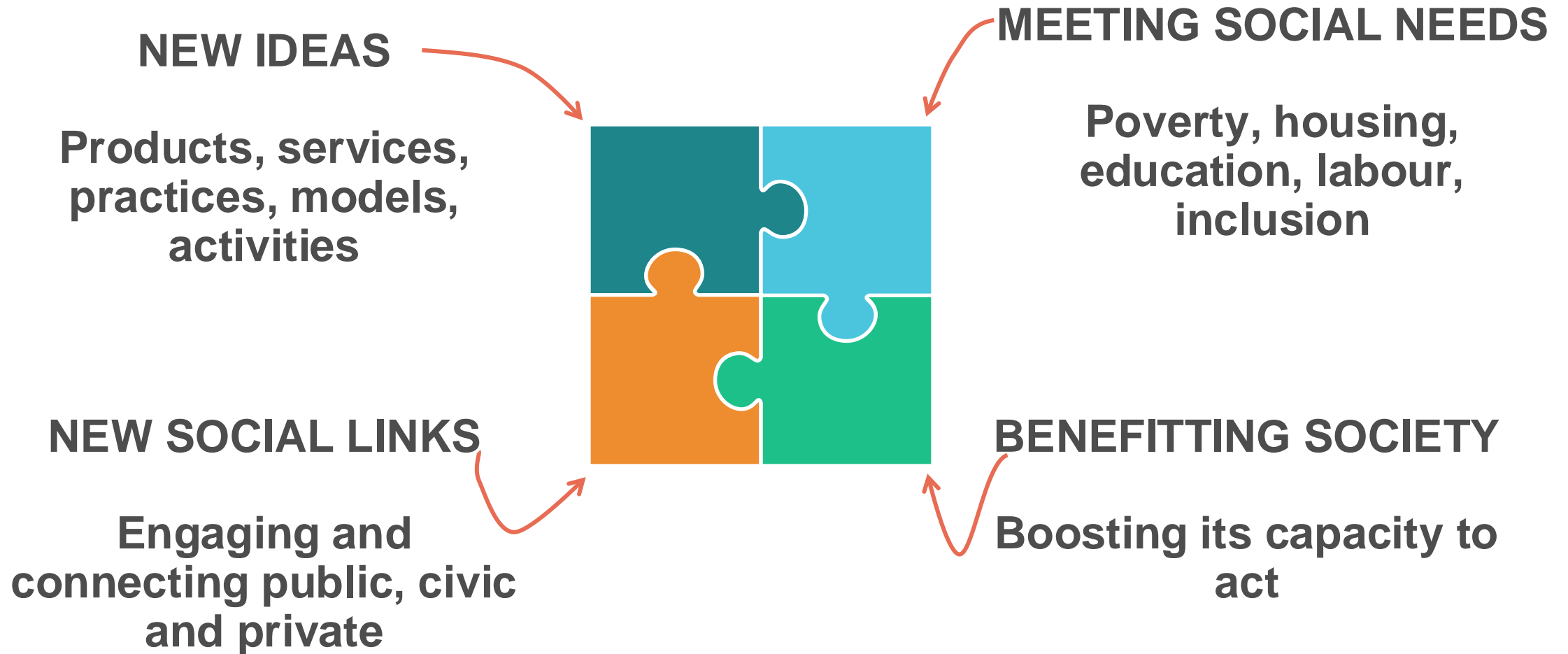


# European Social Fund Plus Social Innovation+ initiative

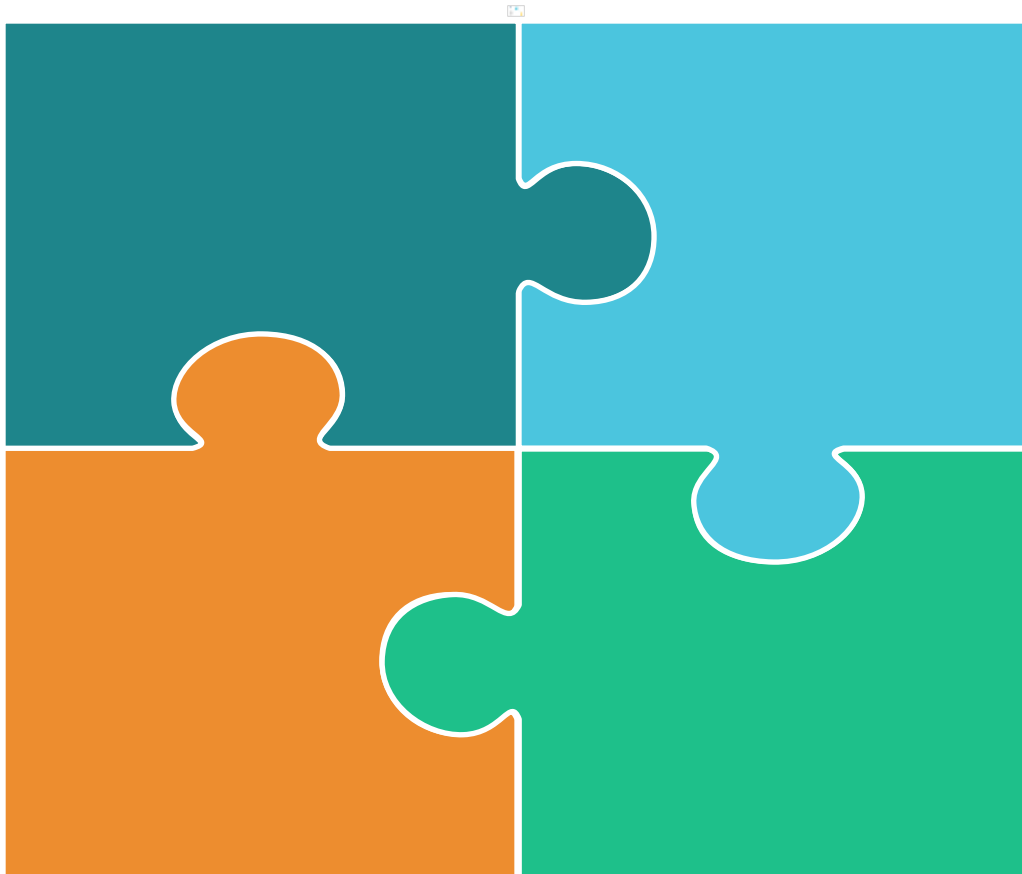
**Eurodiaconia Funding  
Network Meeting  
14 November 2024**

Michael Grosse  
Team Leader, Social Innovation  
DG EMPL.G2

# What is Social Innovation ?



# EU Support for Social Innovation



**1.8 billion €**

**across**

**44 ESF+  
programmes**

# Employment and Social Innovation - EaSI



~ 762 mil €

~ 10% allocated to  
social experimentation  
EU level

~ Uptake and transfer  
of social  
experimentation (SI+  
initiative) – 197 mil €

# Employment and Social Innovation - EaSI – Social experimentation calls

**Social innovations for a fair green and digital transition**  
- 10 million € indicative budget - 17 bodies signed

**Social innovation practices to combat homelessness**  
- 15 million € indicative budget - 4 bodies signed

**Actions to develop impact performance for the social impact investing**  
- 4.5 million € – 32 projects submitted

# Social Innovation+



**ESF+ for social  
innovation**

**In the Member  
States**

**Art. 14.1 –  
experimentation  
Art. 14.2 – scaling  
up**

# ESF+ for Transnational Cooperation



**Implemented by  
Lithuanian ESFA**

**197 mil €**

**Scaling up and  
transfer of social  
innovations**

# SI+ Initiative under ESFA

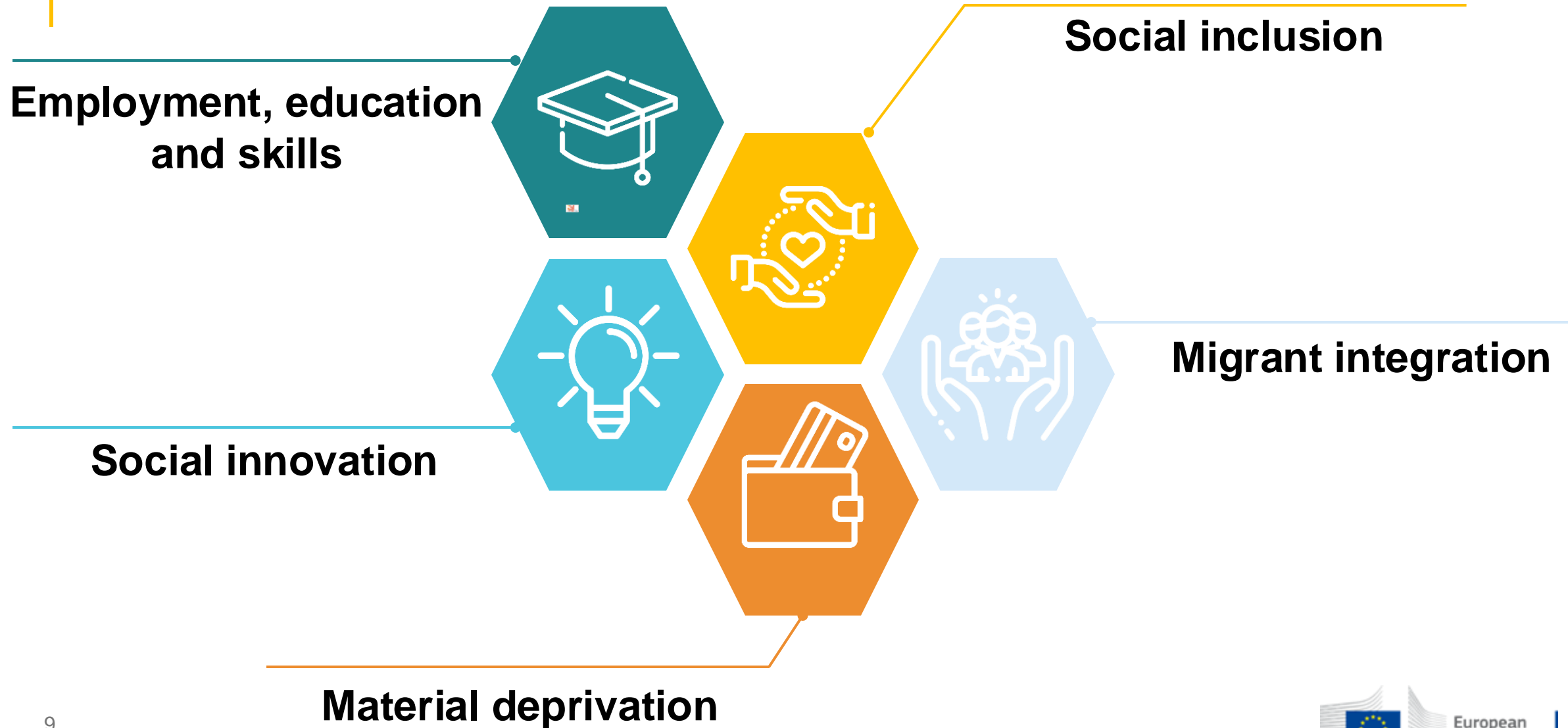
**Transnational calls**  
**5 calls scaling up**  
**new or tested**  
**models**  
**1 call on social**  
**experimentation**

**Knowledge sharing**

**5 Communities of**  
**Practice**  
**2 Networks**



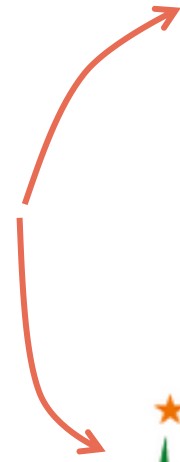
# Communities of Practice



# SI+ Initiative under ESFA



**Knowledge sharing:**



**ALMA  
Network**



# ESF+/EaSI Support Mechanisms



**European Competence  
Centre**

**National Competence  
Centres for SI**

**Social Innovation  
Database/Match**

**EaSI National Contact  
Points**

# Calls for proposals 2023/2024 implemented by ESFA

Call title	Budget	Call announced	Deadline	Projects received
ALMA (Aim-Learn-Master-Achieve)	15 M €	15.12.2022	15.03.2023	34
National Competence Centres for Social Innovation: Building-up and Consolidating the Capacity	8 M €	17.08.2023	18.12.2023	5
Social Innovations for the Upskilling of Vulnerable Youth, Especially Young People not in Employment, Education, or Training (NEETs)	9 M €	10.11.2023	27.03.2024	108
Innovative Approaches to Mitigate the Societal Consequences of Russia's War of Aggression Against Ukraine within EU MS	22 M €	24.01.2024	30.05.2024	102
Innovative Approaches Tackling Long-Term Unemployment	23 M €	18.04.2024	30.09.2024	76



# Tested models – models in testing



Social innovation can require testing existing models or outlining existing problems and inviting stakeholders to propose new models

# Tested models – models in testing



Housing First - tested in the EU since 2016 via ESF+



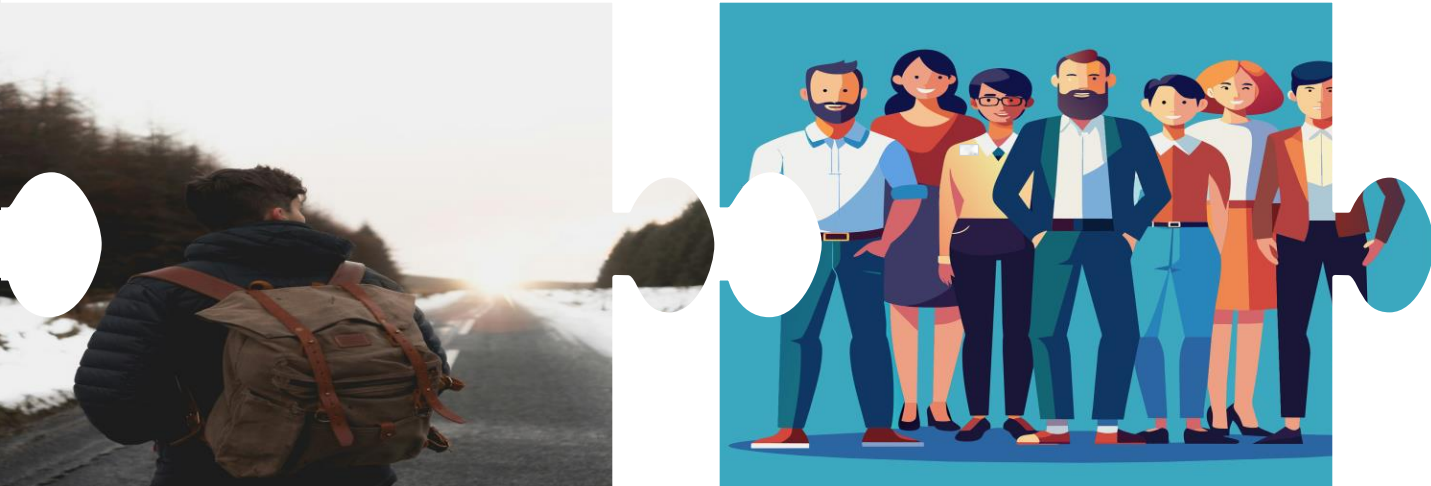
# Tested models – models in testing



ALMA – Aim, Learn, Master, Achieve

On-going call under SI+, 29 participating bodies, 11.6 mil €, over 800 young people helped

# Tested models – models in testing



Zero Long Term Unemployment

New SI+ Call, applications currently assessed, 23 mil €



## Innovative Approaches Tackling Long-Term Unemployment

### ESF-SI-2024-LTU-01



**Long Term Unemployed Persons** - individuals of working age who have been without employment for at least 12 months, irrespective of whether they are officially registered with the national public employment services.

### Activities



Collaboration  
and capacity  
building



Partnerships  
with local  
communities  
and employers



Reaching out to  
the target  
group



Empowering  
employability  
and social  
inclusion



Offering  
working  
options and  
opportunities



Participating in  
mutual learning  
events

### Essential elements of the application

Each application shall cover all the elements. However, applicants are free to choose how to combine all these elements in the project framework.



Conceptual  
framework



Relevance of social  
innovation



Transnational  
partnership



Diversity of  
stakeholders



User-centred  
approach



Impact  
measurement and  
management



Dissemination

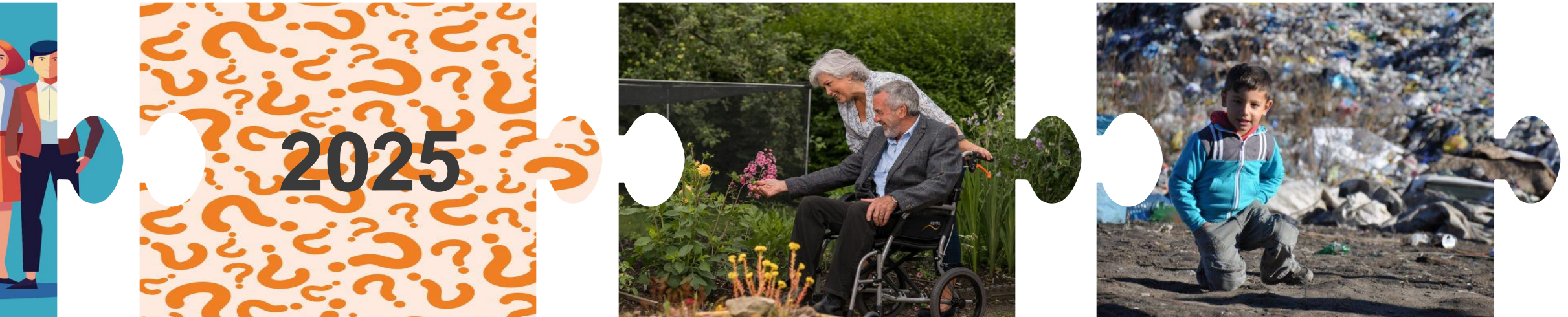
# Tested models – models in testing



Zero Long Term Unemployment

New SI+ Call, applications currently assessed, 23 mil €

# Tested models – models in testing



2025 - Innovative approaches for a Disability Employment Package



# Tested models – models in testing



2025 - Child Poverty and the implementation of the Child Guarantee

# Preparing for Social Innovation calls

Read  
ESFA  
Website



Browse  
Social  
Innovation  
Match and  
get inspired

Stay on top of  
ESF+ and  
EaSI news via  
EU  
Commission  
sites and  
social media

Follows  
national  
ESF+  
managing  
authorities

[socialinnovationplus.eu](https://socialinnovationplus.eu)

# Further reading



<https://op.europa.eu/en/publication-detail/-/publication/f999b770-e342-11ec-a534-01aa75ed71a1>

ISBN: 978-92-76-52209-6 DOI:10.2767/68505  
KE-01-22-381-EN-N



<https://op.europa.eu/en/publication-detail/-/publication/1f092971-e08c-11ec-a534-01aa75ed71a1>

ISBN: 978-92-76-52209-6 DOI:10.2767/68505  
KE-01-22-381-EN-N

# Links

## Websites

<https://www.socialinnovationplus.eu>

<https://ec.europa.eu/european-social-fund-plus/en>

## Calls

<https://www.esf.lt/en/transnational-calls/1224>

## Social Innovation Match (SIM) – database

<https://european-social-fund-plus.ec.europa.eu/en/social-innovation-match>

# Thank you

riikka.torppa@ec.europa.eu



© European Union 2024

Unless otherwise noted the reuse of this presentation is authorised under the [CC BY 4.0](https://creativecommons.org/licenses/by/4.0/) license. For any use or reproduction of elements that are not owned by the EU, permission may need to be sought directly from the respective right holders.